

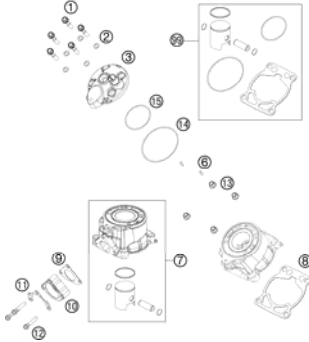
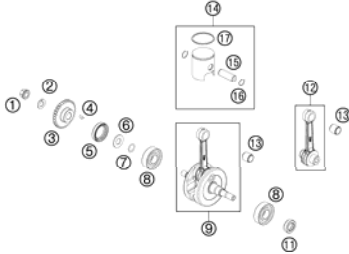
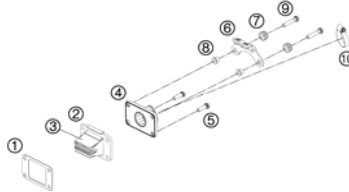
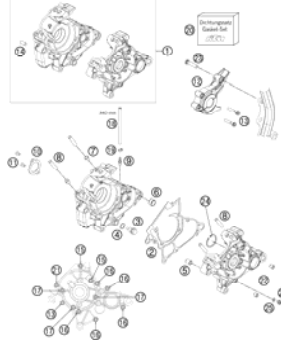
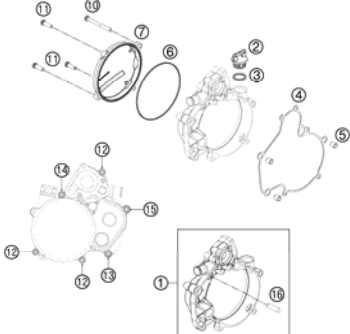
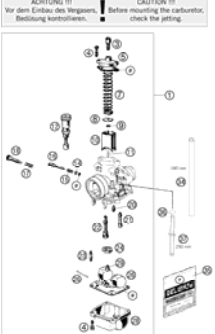
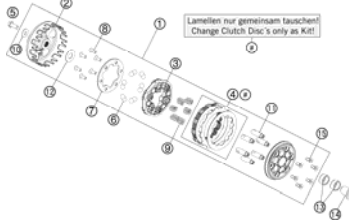
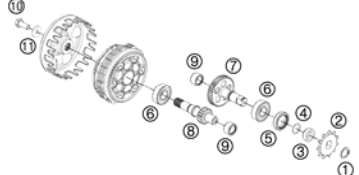
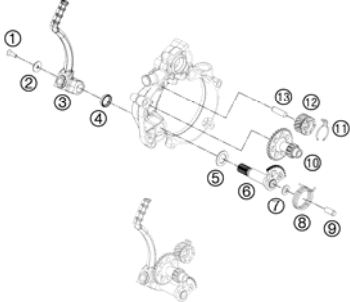

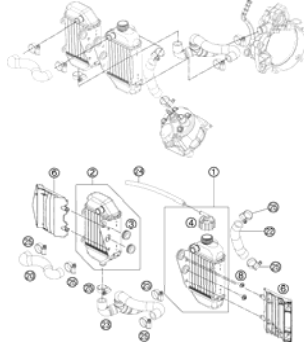
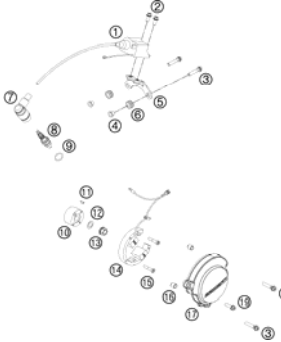
## SPARE PARTS MANUAL: ENGINE

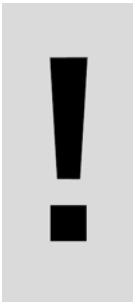
ART.NO.: 3CM080256MEN

ENGLISH



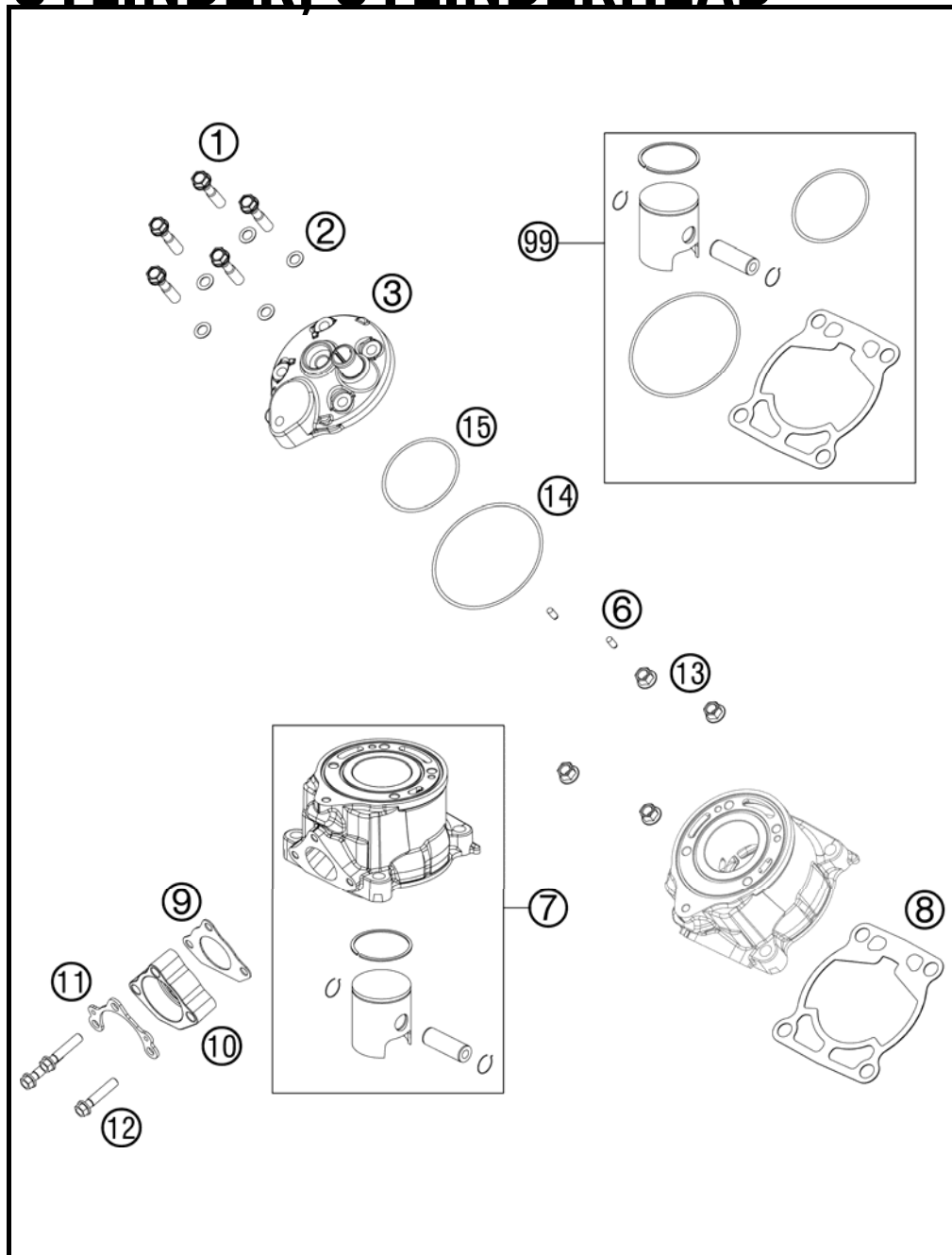


|  |   |   |  |
|--|---|---|--|
| <b>CYLINDER, CYLINDERHEAD</b><br><br><b>3</b> | <b>CRANKSHAFT, PISTON</b><br><br><b>4</b> | <b>REED VALVE CASE</b><br><br><b>5</b>   | <b>ENGINE CASE</b><br><br><b>6</b>        |
| <b>CLUTCH COVER</b><br><br><b>7</b>           | <b>CARBURATOR</b><br><br><b>8</b>          | <b>CLUTCH</b><br><br><b>10</b>           | <b>TRANSMISSION</b><br><br><b>11</b>      |
| <b>KICK STARTER</b><br><br><b>12</b>        | <b>WATER PUMP</b><br><br><b>13</b>      | <b>COOLING SYSTEM</b><br><br><b>14</b> | <b>IGNITION SYSTEM</b><br><br><b>15</b> |

|  |   |  |  |
|--|---|--|--|
|  |   |  |  |
|  |   |  |  |
|  |  | <p>All information contained is without obligation. KTM-Sportmotorcycle AG particularly reserves the right to modify any equipment, technical specifications, prices, colors, shapes, materials, services, service work, constructions, equipment and the like so as to adapt them to local conditions or to cancel any of the above items, all without previous announcement and without giving reasons. KTM may stop manufacturing certain models without previous notice. KTM shall not be held liable for any deviations of availability and/or ability to deliver, illustrations, descriptions, printing and/or other errors. The illustrated models partly contain extra equipment, which is not applied to standard models. © by KTM-SPORTMOTORCYCLE AG, Mattighofen AUSTRIA; All rights reserved; Reprint, also in extracts, with written allowance of KTM-SPORTMOTORCYCLE AG, Mattighofen only.</p> |  |

# CYLINDER, CYLINDERHEAD

50 SX 2013



| FIG | PART NUMBER | DESCRIPTION                    | QTY |
|-----|-------------|--------------------------------|-----|
| 1   | 50330079000 | CYL. HEAD BOLT M 7X30 WS=10    | 5   |
| 2   | 0603070121  | CU-SEAL RING DIN7603- 7,3X12X1 | 5   |
| 3   | 45230006000 | CYLINDER HEAD                  | 1   |
| 6   | 0402040980  | NEEDLE ROL.DIN5402 NRB 4X9,8   | 2   |
| 7   | 45230038000 | CYLINDER + PISTON              | 1   |
| 8   | 46230035020 | CYLINDER BASE GASKET 0,2 MM    | x   |
| 8   | 46230035040 | CYLINDER BASE GASKET 0,4 MM    | x   |
| 8   | 46230035050 | CYLINDER BASE GASKET 0,5 MM    | x   |
| 8   | 46230035060 | CYLINDER BASE GASKET 0,6MM     | x   |
| 9   | 45205004000 | EXHAUST FLANGE GASKET          | 1   |
| 10  | 45205003000 | EXHAUST FLANGE                 | 1   |
| 11  | 46205003050 | BRACKET FOR SPRINGHOLDER       | 1   |
| 12  | 0025060306  | HH COLLAR SCREW M6X30 TX30     | 3   |
| 13  | 46030045000 | COLLAR NUT M8 WS=10            | 4   |
| 14  | 0770078020  | O-RING 78,00X2,00 VIT. BLACK   | 1   |
| 15  | 0770052020  | O-RING 52,00X2,0 VITON 75      | 1   |
| 99  | 00050000208 | PISTON KIT GR.I 50 SX 09-12    | x   |
| 99  | 00050000209 | PISTON KIT GR.II 50 SX 09-12   | x   |

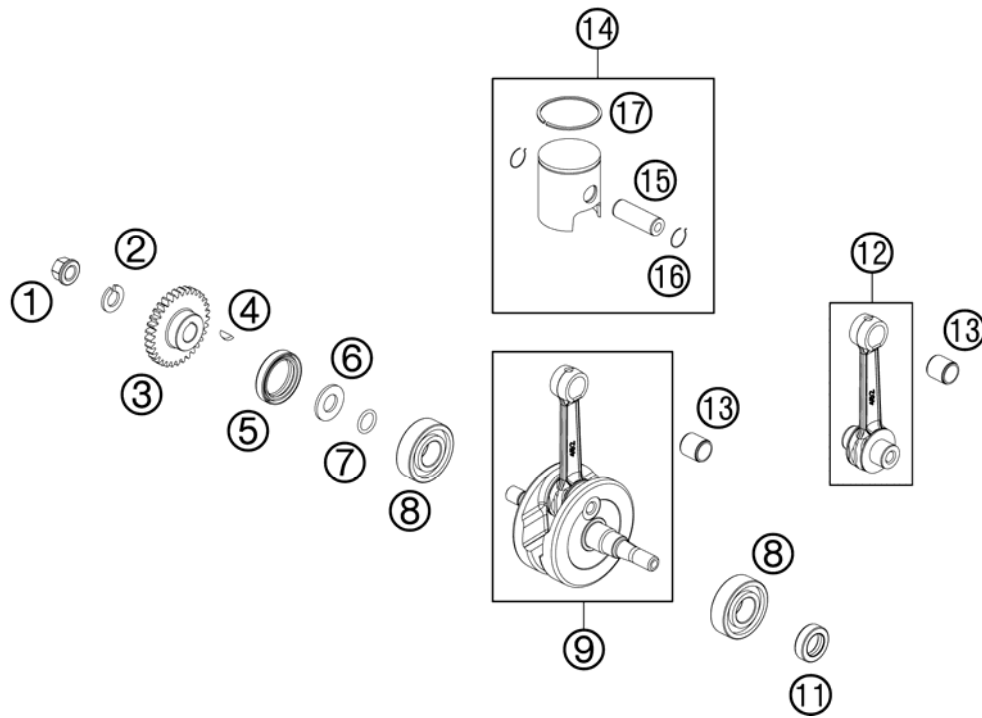
124523050 / C124523050

\* NEW PART

X AS REQUIRED

# CRANKSHAFT, PISTON

50 SX 2013



| FIG | PART NUMBER    | DESCRIPTION                    | QTY |
|-----|----------------|--------------------------------|-----|
| 1   | 58414030000    | HH COLLAR NUT M10X1,25 WS=13   | 1   |
| 2   | 45230072000    | LOCKING RING VSK 10            | 1   |
| 3   | 45232023033    | PRIMARY DRIVE 33T              | 1   |
| 4   | 0888030037     | WOODRUFF KEY DIN6888-3X3,7     | 1   |
| 5   | 0760263561     | SHAFT SEAL RING 26X35X6BSL NB  | 1   |
| 6   | 45230016000    | SPACER WASHER - CRANKSHAFT     | 1   |
| 7   | 0770120020     | O-RING 12,00X2,00 NBR 70       | 1   |
| 8   | 0625062035     | BALL BEARING 6203 JR2 C3       | 2   |
| 9   | 45230018000    | CRANKSHAFT CPL.                | 1   |
| 11  | 0760152472     | SHAFT SEAL RING 15X24X7 A-DUO  | 1   |
| 12  | 45230015000    | PISTON ROD REP-SET 09          | 1   |
| 13  | 45130034000    | NEEDLE BEAR.PISTONPIN 12X15X15 | 1   |
| 14  | 45230007000 I  | PISTON CPL. I 2009             | 1   |
| 14  | 45230007000 II | PISTON CPL. II 2009            | 1   |
| 15  | 45230033000    | PISTON BOLT 09                 | 1   |
| 16  | 45230074000    | CIRCLIP 09                     | 2   |
| 17  | 45230030000    | PISTONRING 09                  | 1   |

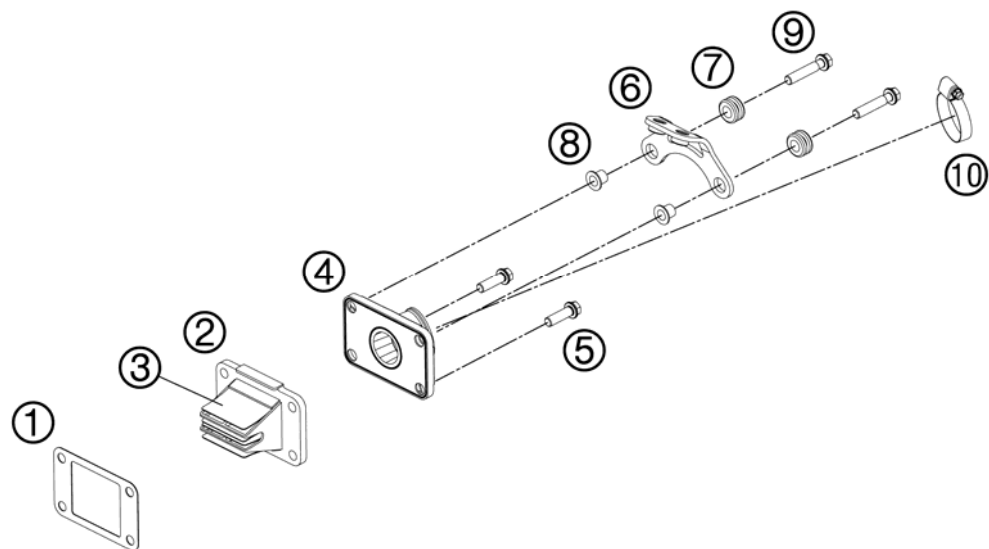
124523060 / C124523061

\* NEW PART

X AS REQUIRED

# REED VALVE CASE

50 SX 2013

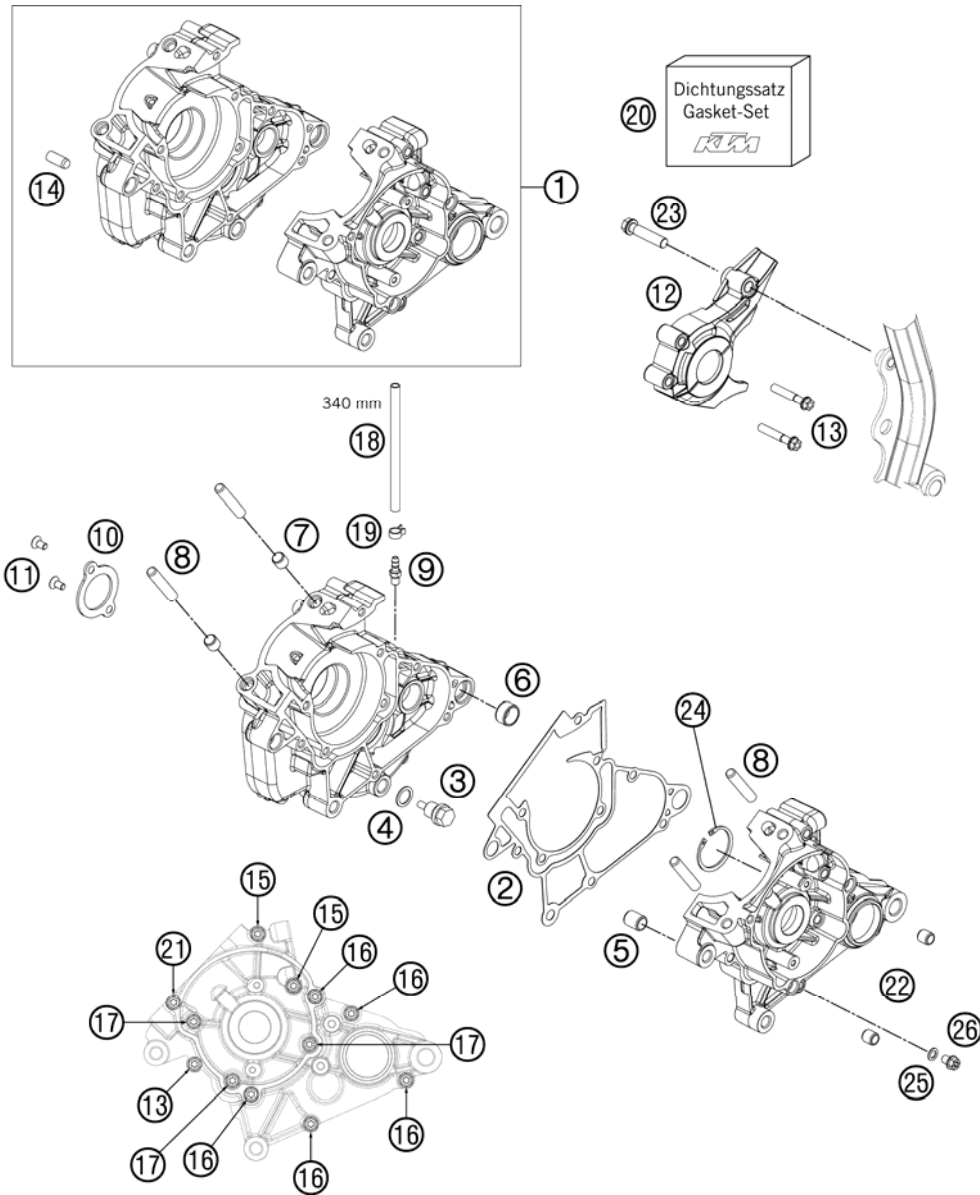


| FIG | PART NUMBER | DESCRIPTION                    | QTY |
|-----|-------------|--------------------------------|-----|
| 1   | 46230049000 | GASKET MEMBRAN CASE            | 1   |
| 2   | 45230051044 | MEMBRANE CASE CPL. V-VORCE     | 1   |
| 3   | 46230052000 | MEMBRANE                       | 1   |
| 4   | 45230050000 | INTAKE FLANGE                  | 1   |
| 5   | 0025060206  | HH COLLAR SCREW M6X20 TX30     | 2   |
| 6   | 45239010000 | IGNIT. COIL RETAIN. PLATE CPL. | 1   |
| 7   | 31008060000 | RUBBER SLEEVE D=8MM OPEN       | 2   |
| 8   | 45239060050 | COLLAR BUSHING 6,3X8X13X9,5    | 2   |
| 9   | 0025060306  | HH COLLAR SCREW M6X30 TX30     | 2   |
| 10  | 10001120000 | CLAMP 25-40 SGT 4              | 1   |

124523070 / C124523071

\* NEW PART

X AS REQUIRED



| FIG | PART NUMBER | DESCRIPTION                    | QTY |
|-----|-------------|--------------------------------|-----|
| 1*  | 4523000233  | ENGINE CASE CPL.50SX           | 13  |
| 2   | 45230039000 | ENGINE CASE GASKET             | 1   |
| 3   | 58030021000 | OILDRAIN PLUG W.MAG. M 12X1,5  | 1   |
| 4   | 58038022000 | CU-SEAL RING DIN7603-12X18X1,5 | 1   |
| 5   | 46230024000 | DOWEL 12X9X14,5                | 2   |
| 6   | 58330023000 | DOWEL 17 X 14 X 9,5            | 1   |
| 7   | 46230023000 | DOWEL 10X8,2X10                | 2   |
| 8   | 46030043000 | STUD M8X41                     | 4   |
| 9   | 58336020190 | VACUUM CONECTION M6/3MM '97    | 1   |
| 10  | 45230017000 | BEARING BRACKET                | 1   |
| 11  | 0019050106  | INT. TORX FLAT HEAD M5X10 10.9 | 2   |
| 12  | 45230060000 | CHAIN GUARD                    | 1   |
| 13  | 0025060356  | HH COLLAR SCREW M6X35 TX30     | 3   |
| 14  | 0325080200  | CYLINDER STUD DIN6325 8X20 M6  | 1   |
| 15  | 0025060556  | HH COLLAR SCREW M6X55 TX30     | 2   |
| 16  | 0025060306  | HH COLLAR SCREW M6X30 TX30     | 6   |
| 17  | 0025060406  | HH COLLAR SCREW M6X40 TX30     | 3   |
| 18  | 31007007101 | PVC-HOSE 4X6MM                 | x   |
| 19  | 45230089000 | YDNAC-CLAMP 10068 (6,8MM)      | 1   |
| 20  | 45230099000 | GASKET SET 50 SX 2009          | 1   |
| 21  | 0025060206  | HH COLLAR SCREW M6X20 TX30     | 1   |
| 22  | 45230024000 | DOWEL 9,8X7X5.5                | 2   |
| 23  | 0025080356  | HH COLLAR SCREW M8X35 TX40     | 1   |
| 24  | 0472035150  | CIRCLIP DIN0472-35X1,5         | 1   |
| 25* | 0603061001  | CU-SEAL RING DIN7603-6X10X1    | 1   |
| 26* | 0025060086  | HH COLLAR SCREW M6X8 TX30      | 1   |

134523012 / C134523012

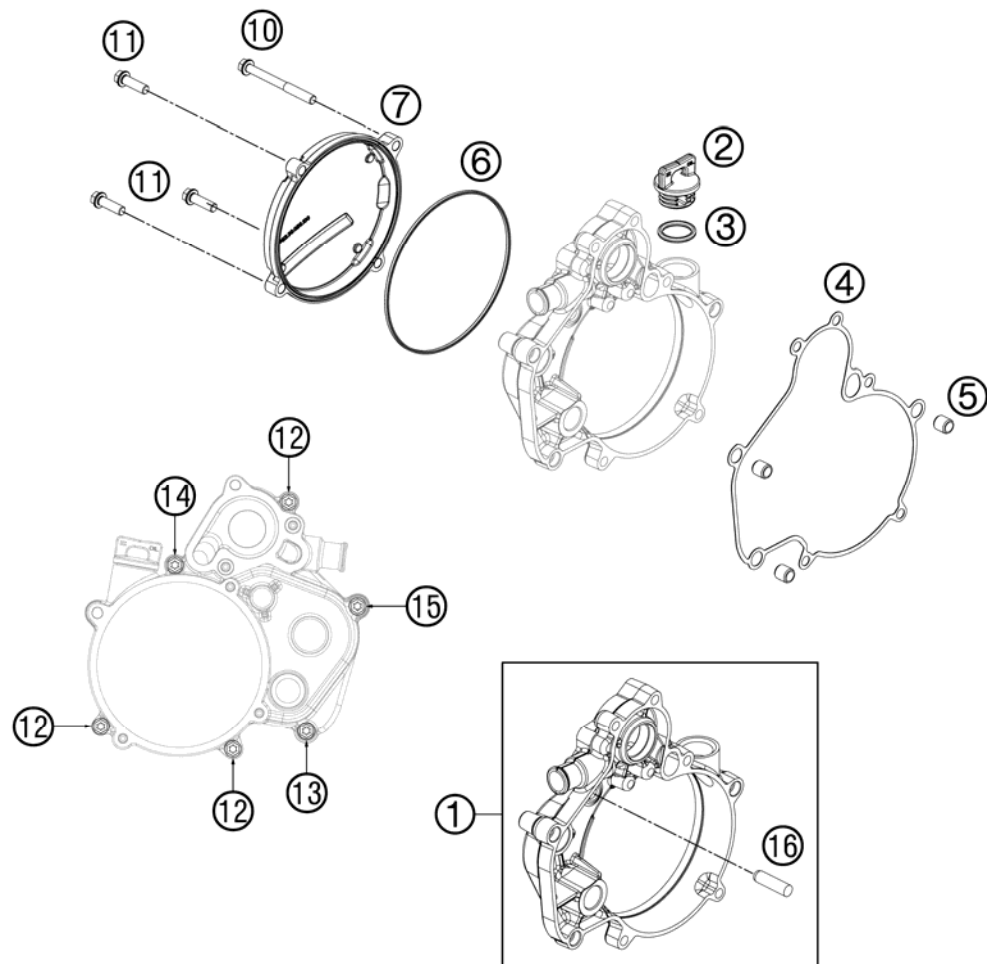
\* NEW PART

X AS REQUIRED



# CLUTCH COVER

50 SX 2013



| FIG | PART NUMBER | DESCRIPTION                   | QTY |
|-----|-------------|-------------------------------|-----|
| 1   | 45230001044 | CLUTCH COVER INNER CPL.       | 1   |
| 2   | 58030020100 | PLUG CPL. M24X3               | 1   |
| 3   | 0770191015  | O-RING 19,00X3,00 NBR         | 1   |
| 4   | 45230025000 | CLUTCH COVER GASKET INSIDE    | 1   |
| 5   | 49030090000 | DOWEL 9,8 X 7 X 10            | 3   |
| 6   | 45230027000 | CLUTCH COVER GASKET           | 1   |
| 7*  | 45230026100 | CLUTCH COVER OUTSIDE          | 1   |
| 10  | 0025060606  | HH COLLAR SCREW M6X60 TX30    | 1   |
| 11  | 0025060206  | HH COLLAR SCREW M6X20 TX30    | 3   |
| 12  | 0025060256  | HH COLLAR SCREW M6X25 TX30    | 3   |
| 13  | 0025060306  | HH COLLAR SCREW M6X30 TX30    | 1   |
| 14  | 0025060356  | HH COLLAR SCREW M6X35 TX30    | 1   |
| 15  | 0025060506  | HH COLLAR SCREW M6X50 TX30    | 1   |
| 16  | 0325080300  | CYLINDER STUD DIN6325 8X30 M6 | 1   |

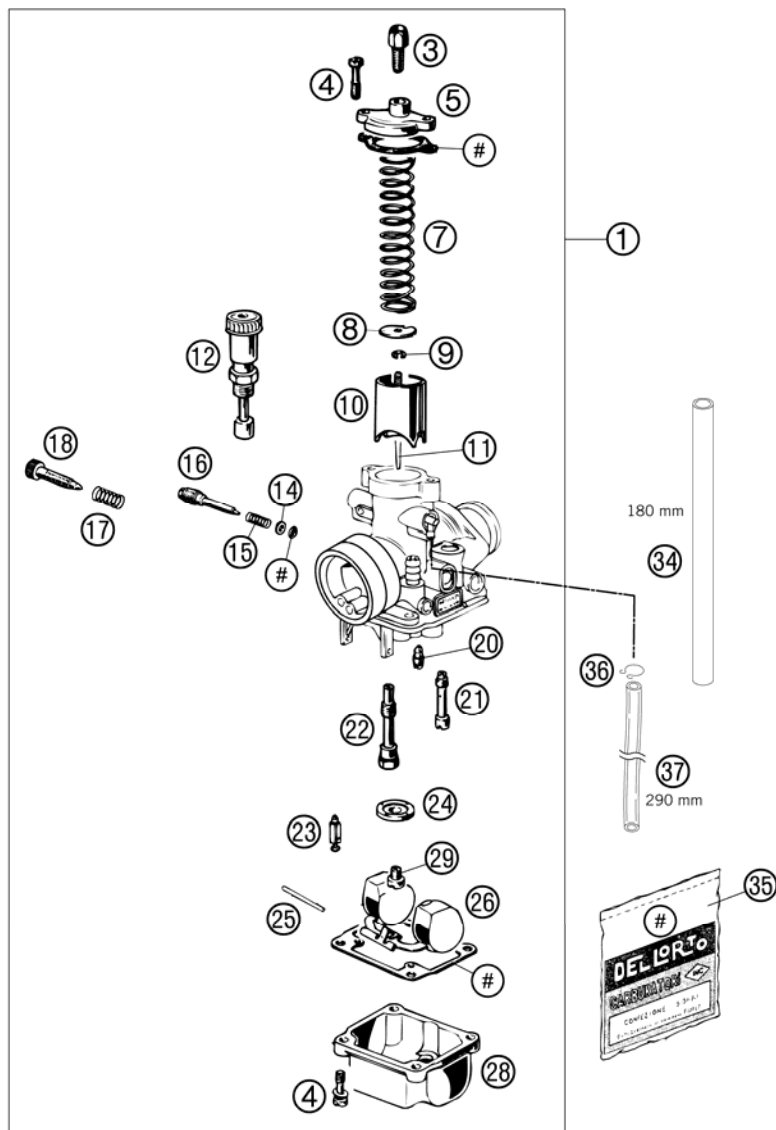
134523020 / C134523020

\* NEW PART

X AS REQUIRED

**ACHTUNG !!!**  
Vor dem Einbau des Vergasers,  
Bedüsung kontrollieren.

**CAUTION !!!**  
Before mounting the carburetor,  
check the jetting.



| FIG | PART NUMBER | DESCRIPTION   | QTY |
|-----|-------------|---|-----|
| 1   | 45131001100 | CARBUR. DELLO. PHBG 19 BS 2001<br>CHECK THE JETTING | 1   |
| 3   | 57031525000 | ADJUSTMENT SCREW M6X0,75                            | 1   |
| 4   | 0016040163  | HH COLLAR SCREW M 4X16 WS=6                         | 6   |
| 5   | 45131027000 | CARBURETOR COVER DELLORTO 19                        | 1   |
| 7   | 45131030000 | SPRING DELLORTO                                     | 1   |
| 8   | 45131109000 | RETAINING SPRING DELLORTO                           | 1   |
| 9   | 0799025055  | TAB WASHER DIN6799-RS 2,5                           | 1   |
| 10  | 45131035000 | THR. VALVE DELLO.19 60 2001                         | x   |
| 10  | 45131035040 | THR. VALVE DELLO.40 2008                            | x   |
| 11  | 45131034009 | JET NEEDLE W9                                       | 1   |
| 12  | 45131048000 | STARTING BUTTON DELLORTO 19                         | 1   |
| 14  | 57031572000 | WASHER 3,3 X 5,8 X 0,5                              | 1   |
| 15  | 45131015000 | SPRING DELLORTO                                     | 1   |
| 16  | 45131017000 | AIR ADJUST SCREW DELLORTO                           | 1   |
| 17  | 45131518000 | SPRING  | 1   |
| 18  | 45131019000 | IDLE ADJUST SCREW                                   | 1   |
| 20  | 45131007045 | IDLING JET 45 DELLORTO                              | x   |
| 20  | 45131007048 | IDLING JET 48 DELLORTO                              | x   |
| 20  | 45131007050 | IDLING JET 50 DELLORTO                              | x   |
| 20  | 45131007052 | IDLING JET 52 DELLORTO                              | x   |
| 20  | 45131007055 | IDLING JET 55 DELLORTO                              | x   |
| 20  | 45131007058 | IDLING JET 58 DELLORTO                              | x   |
| 21  | 45131051060 | START JET 60 DELLORTO                               | 1   |
| 22  | 45131021260 | NEEDLE JET 260                                      | x   |
| 22  | 45131021262 | NEEDLE JET 262                                      | x   |
| 23  | 45131020000 | FLOATING NEEDLE VALVE DELLORTO                      | 1   |
| 24  | 45131074000 | COVER DELLORTO                                      | 1   |
| 25  | 45131008000 | PIN DELLORTO  | 1   |
| 26  | 45131009000 | FLOAT 4 GR.   | 1   |
| 28  | 45131011000 | FLOAT BOWL DELLORTO 19                              | 1   |
| 29  | 15131123080 | MAIN JET 80 DELLORTO                                | x   |
| 29  | 15131123085 | MAIN JET 85 DELLORTO                                | x   |
| 29  | 15131123090 | MAIN JET 90 DELLORTO                                | x   |
| 34  | 58307016001 | FUEL HOSE VITON 6X1,5 PER/M                         | x   |

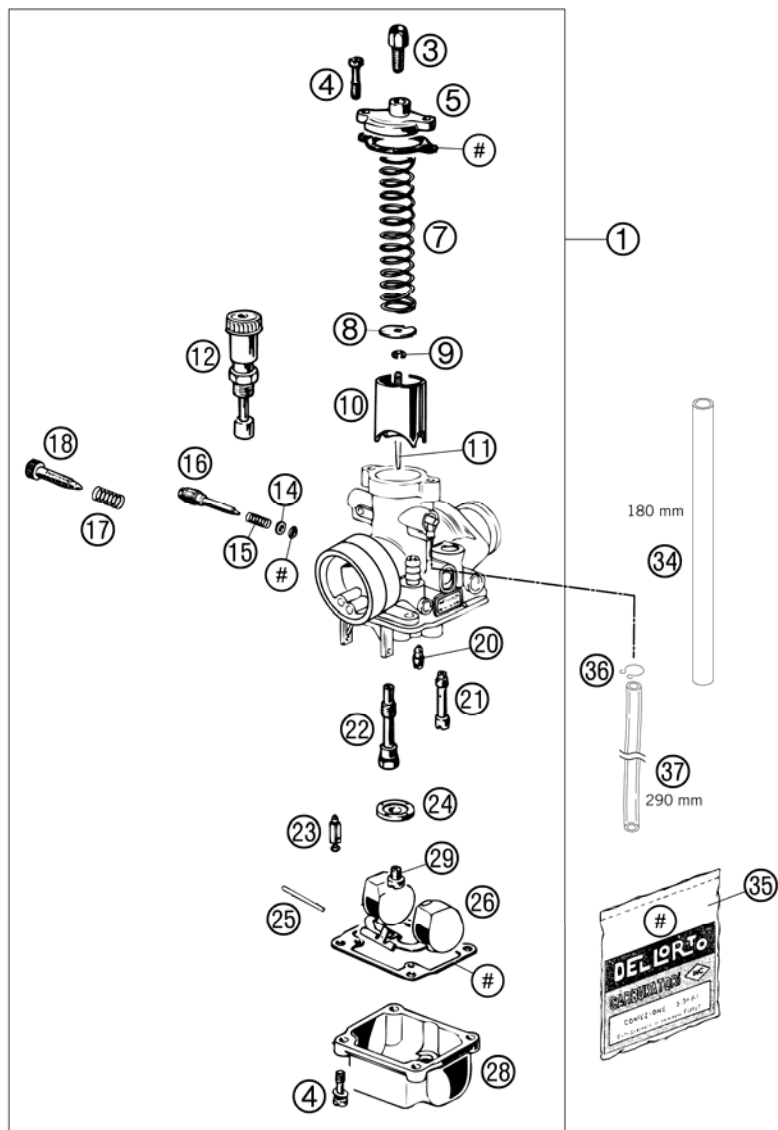
124523112 / C124523112

\* NEW PART

X AS REQUIRED

**ACHTUNG !!!**  
Vor dem Einbau des Vergasers,  
Bedüsung kontrollieren.

**CAUTION !!!**  
Before mounting the carburetor,  
check the jetting.

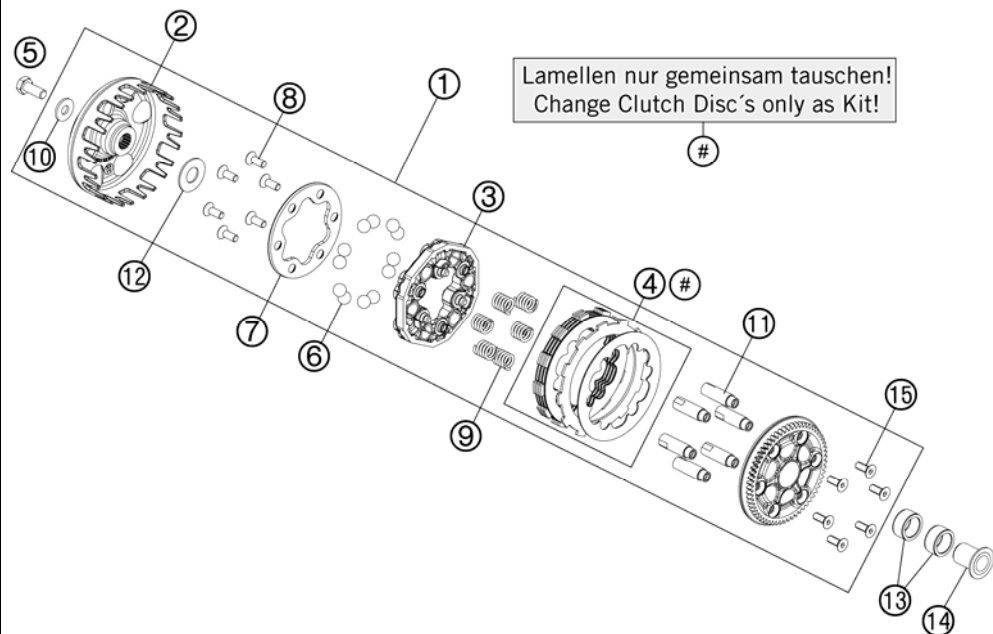


| FIG | PART NUMBER | DESCRIPTION            | QTY |
|-----|-------------|------------------------|-----|
| 35  | 45131099000 | GASKET SET DELLORTO 19 | 1   |
| 36  | 54531696000 | CLAMP 6 MM             | 1   |
| 37  | 31007007101 | PVC-HOSE 4X6MM         | x   |

124523112 / C124523112

\* NEW PART

X AS REQUIRED

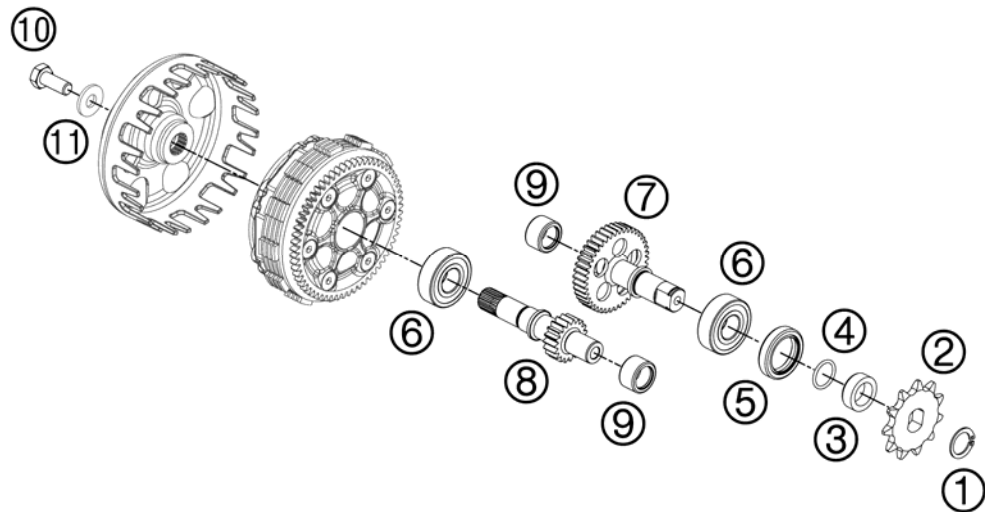


| FIG | PART NUMBER  | DESCRIPTION                    | QTY |
|-----|--------------|--------------------------------|-----|
| 1*  | 45232100044  | AXIAL CLUTCH ASSEMBLY ZSB.     | 1   |
| 2*  | 45232101000  | CLUTCH BASKET                  | 1   |
| 3*  | 45232139044  | BALL CAGE ASSEMBLY             | 1   |
| 4*  | 45232110033  | CLUTCH DISC KIT                | 1   |
| 5   | 0035080206S  | AH-COLLAR SCREW M8X20 ISA45    | 1   |
| 6*  | 0401110000   | BALL D=11MM                    | 12  |
| 7*  | 45232103000  | PRESSURE PLATE                 | 1   |
| 8*  | 0991060166S  | FL.HEAD SCR.DIN7991-M6X16 10.9 | 6   |
| 9*  | 45232105000  | CLUTCH SPRING 15,9MM           | 6   |
| 10* | 0340084234   | WASHER DIN 6340 8,4X23X4       | 1   |
| 11* | 45232107000  | FIT BOLT                       | 6   |
| 12* | 75034050000  | STOP DISK 14X30X1,5 STEEL      | 1   |
| 13  | 0402182412   | NEEDLE BEARING 18X24X12A       | 2   |
| 14  | 45232013000  | INNER RING WITH COLLAR         | 1   |
| 15* | 09910601661S | FL.HEAD SCR.DIN7991-M6X16 10.9 | 6   |

134523210 / C134523210

\* NEW PART

X AS REQUIRED

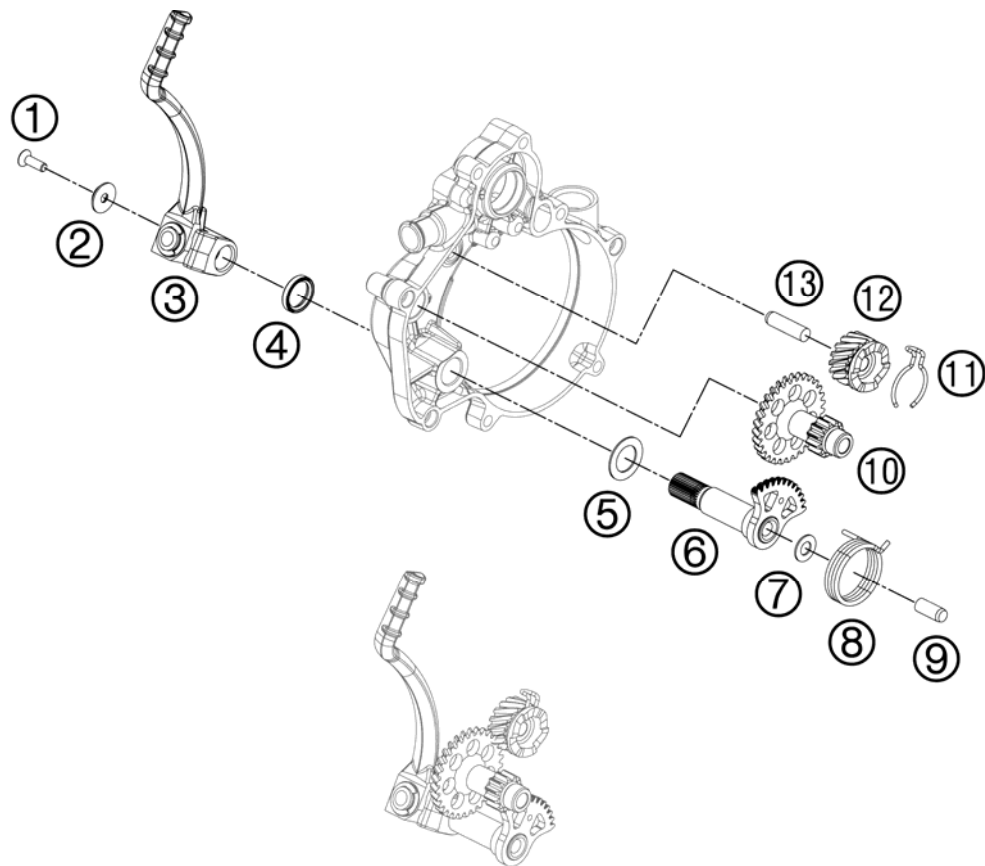


| FIG | PART NUMBER | DESCRIPTION                  | QTY |
|-----|-------------|------------------------------|-----|
| 1   | 0471150010  | CIRCLIP DIN0471-15X1         | 1   |
| 2   | 45233029010 | SPROCKET 10 T.               | x   |
| 2   | 45233029011 | SPROCKET 11 T.               | x   |
| 3   | 45233030000 | DISANCESPACER F. SPROCKET    | 1   |
| 4   | 0770015018  | O-RING 15,00X1,80            | 1   |
| 5   | 0760223270  | SHAFT SEAL RING 22X32X7 BSL  | 1   |
| 6   | 45133028000 | BALL BEARING 15X35X11        | 2   |
| 7   | 45233010200 | COUNTER SHAFT                | 1   |
|     |             | ONLY USE WITH 45233001200    |     |
| 8   | 45233001200 | MAIN SHAFT                   | 1   |
|     |             | ONLY USE WITH 45233010200    |     |
| 9   | 54632095000 | NEEDLE BEAR.HK 1412 14X20X12 | 2   |
| 10  | 0035080206S | AH-COLLAR SCREW M8X20 ISA45  | 1   |
| 11* | 0340084234  | WASHER DIN 6340 8,4X23X4     | 1   |

134523310 / C134523310

\* NEW PART

X AS REQUIRED

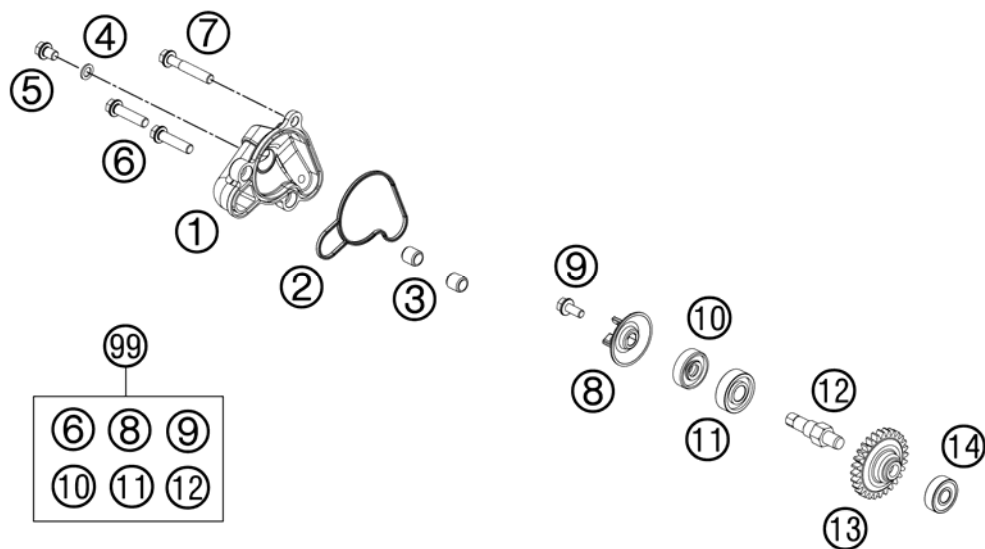


| FIG | PART NUMBER | DESCRIPTION                   | QTY |
|-----|-------------|-------------------------------|-----|
| 1   | 0019050163S | INT. TORX FLAT HEAD M5X16 8.8 | 1   |
| 2   | 60008045100 | SPECIAL WASHER FOR M5 03      | 1   |
| 3   | 45233070044 | KICKSTARTER CPL.              | 1   |
| 4   | 0760162240  | SHAFT SEAL RING BALANC. SHAFT | 1   |
| 5   | 45233058000 | WASHER 16,3X25,8X1            | 1   |
| 6   | 45233050044 | KICK START SHAFT CPL.         | 1   |
| 7   | 45233057000 | WASHER 8,2X16X1               | 1   |
| 8   | 45233054000 | KICKSTARTER SPRING            | 1   |
| 9   | 0325080200  | CYLINDER STUD DIN6325 8X20 M6 | 1   |
| 10  | 45233053000 | KICKSTARTER SHAFT             | 1   |
| 11  | 45233056100 | SPRING RATCHET GEAR           | 1   |
| 12  | 45233052016 | RATCHET GEAR                  | 1   |
| 13  | 0325080300  | CYLINDER STUD DIN6325 8X30 M6 | 1   |

124523390 / C134523390

\* NEW PART

X AS REQUIRED



| FIG | PART NUMBER | DESCRIPTION                   | QTY |
|-----|-------------|-------------------------------|-----|
| 1   | 45235052000 | WATERPUMP COVER               | 1   |
| 2   | 45235053000 | WATER PUMP COVER GASKET       | 1   |
| 3   | 49030090000 | DOWEL 9,8 X 7 X 10            | 2   |
| 4   | 0603061001  | CU-SEAL RING DIN7603-6X10X1   | 1   |
| 5   | 0025060086  | HH COLLAR SCREW M6X8 TX30     | 1   |
| 6   | 0025060256  | HH COLLAR SCREW M6X25 TX30    | 2   |
| 7   | 0025060406  | HH COLLAR SCREW M6X40 TX30    | 1   |
| 8   | 45235055000 | WATER PUMP WHEEL              | 1   |
| 9   | 0014050123  | HH COLLAR SCREW M 5X12 WS=6   | 1   |
| 10  | 0760082472  | SHAFT SEAL RING 8X24X7 A DUO  | 1   |
| 11  | 0625060001  | BALL BEARING 6000/C3          | 1   |
| 12  | 50335054150 | WATER PUMP SHAFT              | 1   |
| 13  | 45235054028 | DRIVE WHEEL                   | 1   |
| 14  | 0625006087  | GROOVED BALL BEAR. 608 2RS C3 | 1   |
| 99  | 54835055010 | WATER PUMP REP. KIT 50/65 SX  | 1   |

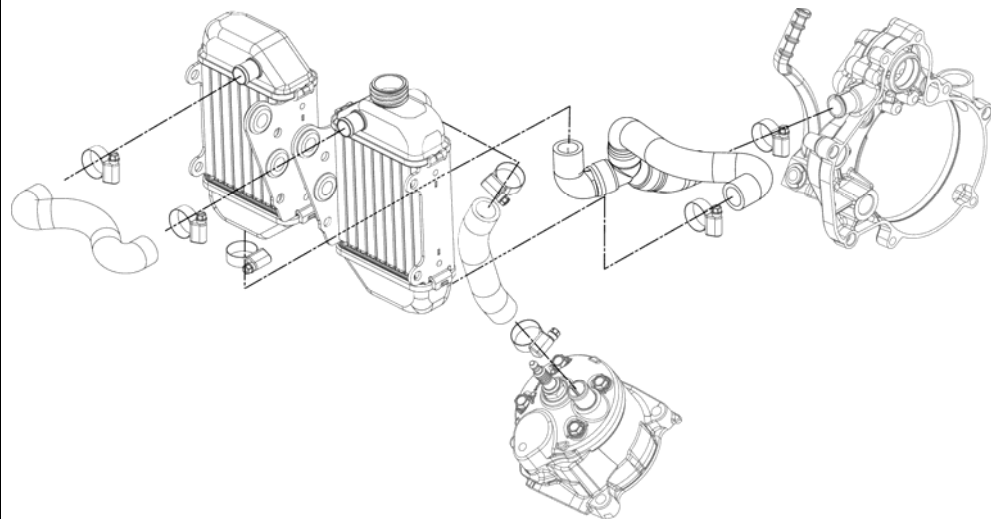
124523510 / C124523510

\* NEW PART

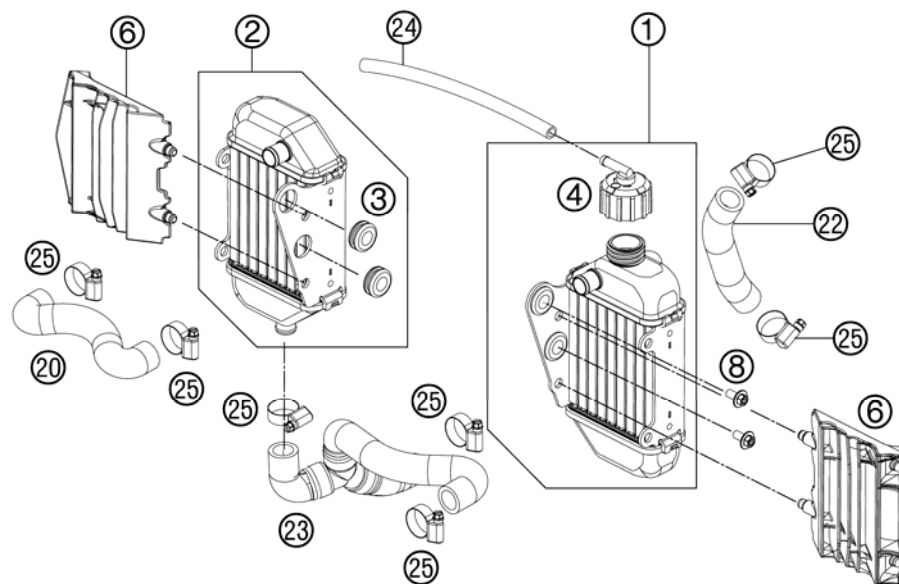
X AS REQUIRED

# COOLING SYSTEM

50 SX 2013



| FIG | PART NUMBER | DESCRIPTION                   | QTY |
|-----|-------------|-------------------------------|-----|
| 1   | 45235007200 | RADIATOR L/S 50 SX            | 1   |
| 2   | 45235008200 | RADIATOR R/S 50 SX            | 1   |
| 3   | 41001052000 | RUBBER SLEEVE D=12MM          | 4   |
| 4   | 45235009000 | RADIATOR CAP 1,8 BAR          | 1   |
| 6   | 45235034100 | RADIATOR PROTECTION           | 2   |
| 8   | 0024060123  | COLLAR SCREW M6X12 TX         | 4   |
| 20  | 45235026200 | PREFORMED HOSE ABOVE          | 1   |
| 22  | 45235025300 | PREF. HOSE RADIATOR- CYL.HEAD | 1   |
| 23  | 45235027033 | RADIATOR HOSE CPL. W.Y-PIECE  | 1   |
| 24  | 55007016001 | PVC-HOSE 7X10 PER METER       | 1   |
| 25  | 42013037400 | HOSE CLAMP NORMA 12/24        | 7   |



134523531 / C134523531

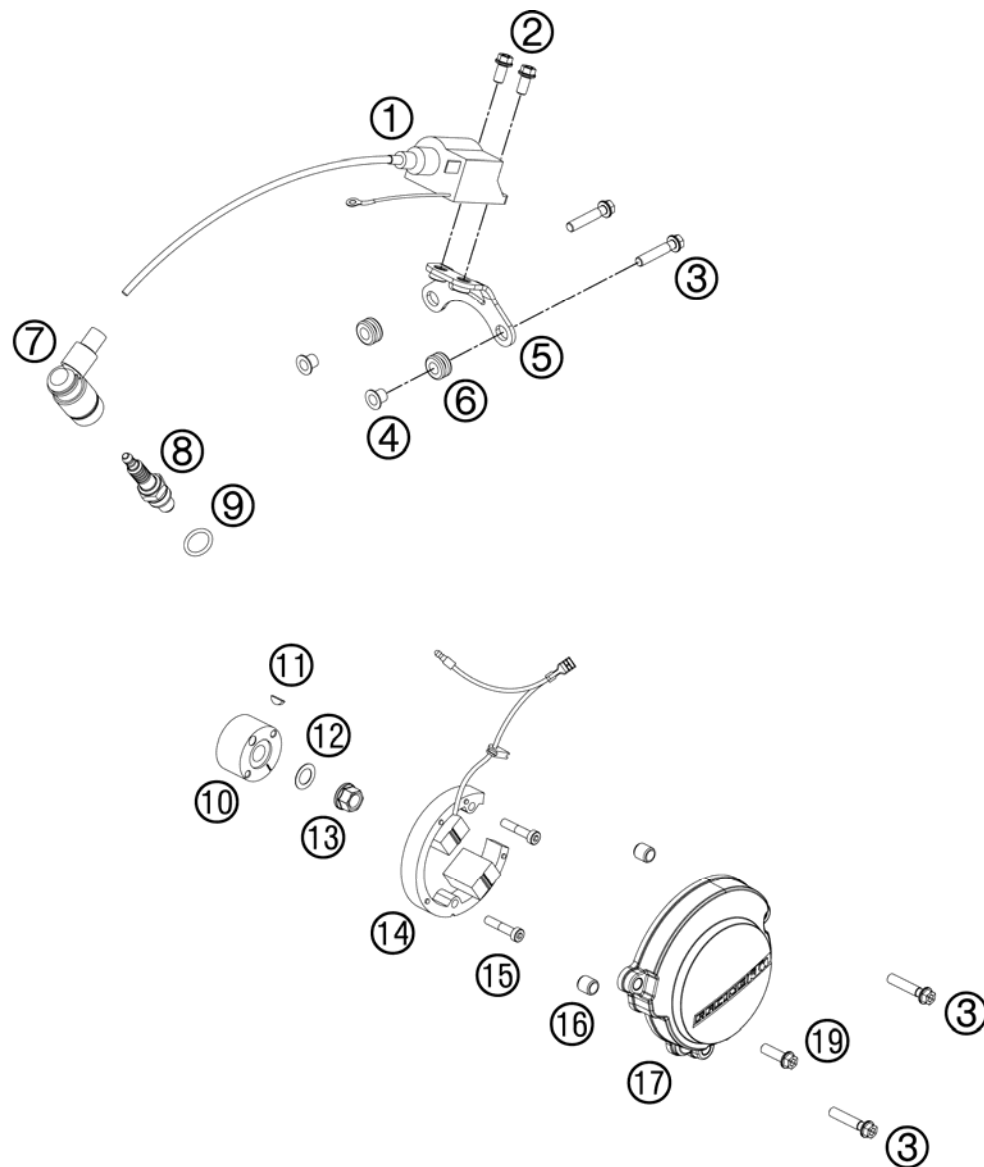
\* NEW PART

X AS REQUIRED



# IGNITION SYSTEM

50 SX 2013

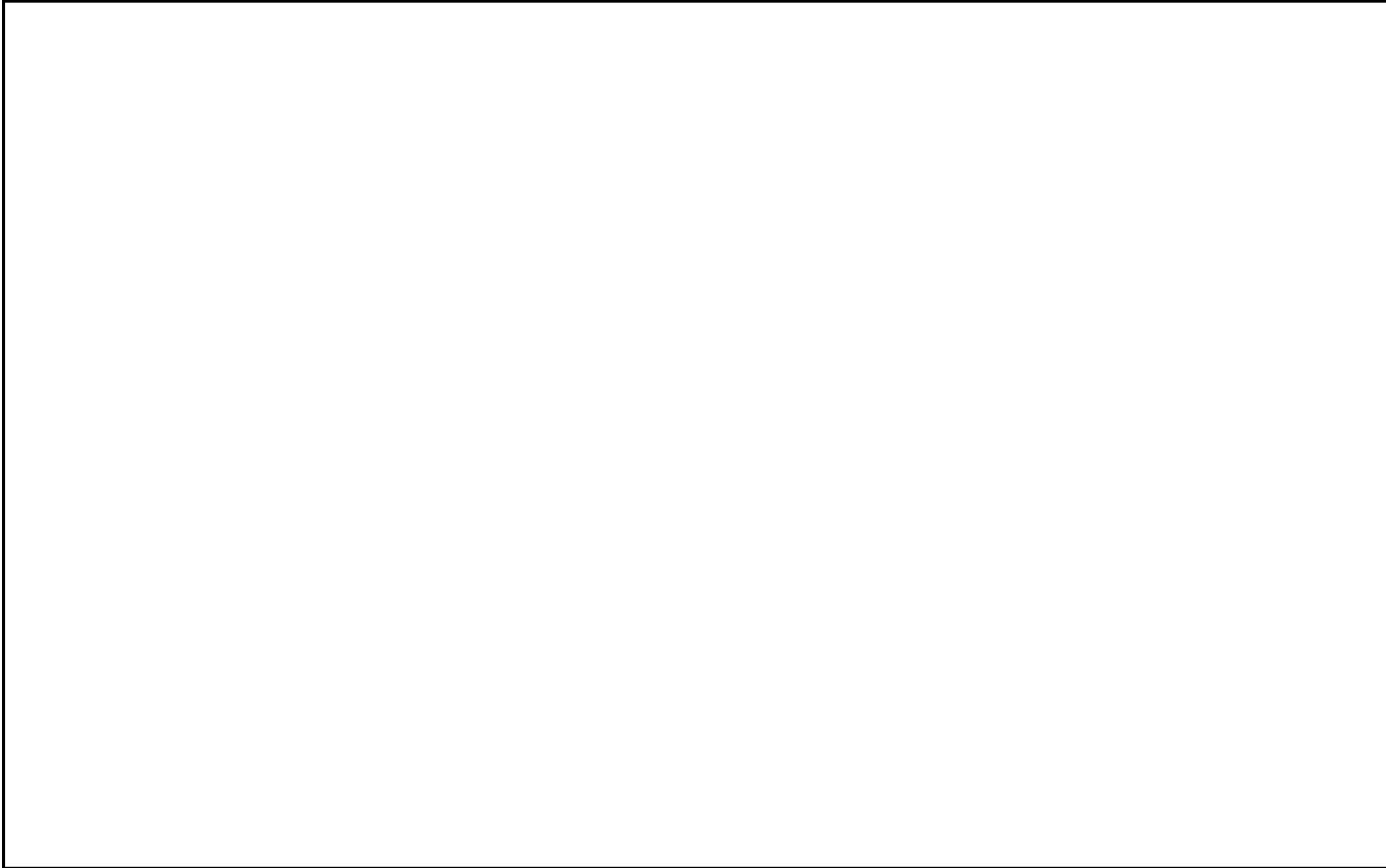


| FIG | PART NUMBER | DESCRIPTION                    | QTY |
|-----|-------------|--------------------------------|-----|
| 1   | 45239006100 | IGNITION COIL                  | 1   |
| 2   | 0025060126  | HH COLLAR SCREW M6X12 TX30     | 2   |
| 3   | 0025060306  | HH COLLAR SCREW M6X30 TX30     | 4   |
| 4   | 45239060050 | COLLAR BUSHING 6,3X8X13X9,5    | 2   |
| 5   | 45239010000 | IGNIT. COIL RETAIN. PLATE CPL. | 1   |
| 6   | 31008060000 | RUBBER SLEEVE D=8MM OPEN       | 2   |
| 7   | 46239090000 | SPARK PLUG CONNECTOR           | 1   |
| 8   | 45239093000 | SPARK PLUG LR8B                | 1   |
| 9   | 0770012030  | O-RING 12,00X3,0 VITON 75      | 1   |
| 10  | 45139005100 | FLYWHEEL ROTOR 50 2004         | 1   |
| 11  | 0888025030  | WOODRUFF KEY DIN6888-2,5X3     | 1   |
| 12  | 45132020000 | WASHER 10,4X16,8X0,4           | 1   |
| 13  | 58414030000 | HH COLLAR NUT M10X1,25 WS=13   | 1   |
| 14  | 45139004000 | FLYWHEEL STATOR 50CCM LC 2001  | 1   |
| 15  | 0012050253  | AH SCREW DIN6912 M5X25         | 2   |
| 16  | 45230024000 | DOWEL 9,8X7X5.5                | 2   |
| 17  | 45230002300 | IGNITION COVER CPL.            | 1   |
| 19  | 0025060206  | HH COLLAR SCREW M6X20 TX30     | 1   |

124523910 / C124523910

\* NEW PART

X AS REQUIRED







KTM-Sportmotorcycle AG  
A-5230 Mattighofen  
[www.ktm.at](http://www.ktm.at)

KTM Group Partner



3CM080256MEN



Art.Nr.: 3CM080256MEN 6/2012